



Datasheet

# OnCommand System Manager

Simplified device-level management as  
you upgrade to clustered Data ONTAP

## Key Benefits

### Simplified Management

Manage NetApp® systems through an easy-to-use GUI.

### Fast, Simple Configuration

Simplify common tasks by using wizards and workflows.

### Extensive Administrative Capabilities

Easily configure and provision storage for file sharing and application workloads.

## The Challenge

IT organizations face significant complexity in deploying and managing technologies for virtualization, cloud, wireless, mobile, and analytics solutions. Compounding this complexity with business and data growth results in even greater management challenges. Wouldn't it be nice if you could manage your storage resources without having to be an expert?

What IT organizations need is a storage management solution that provides the simplicity and efficiency necessary to let them keep pace with data growth and tight IT budgets. They also need a solution with versatile administration capabilities for the latest storage technology, including flash media and scale-out clustered storage.

## The Solution

NetApp OnCommand® System Manager is a simple, versatile GUI management product that enables administrators to easily configure and manage clustered NetApp storage systems.

System Manager is designed with wizards and workflows to simplify common storage tasks such as creating volumes, LUNs, qtrees, shares, and exports, which saves time and helps prevent errors. It's one product that can manage the entire NetApp FAS line, from the entry-level FAS2200 series to the enterprise-class FAS8000 series, including systems running NetApp FlexArray™ storage virtualization software.

### Fast, simple configuration

With System Manager, you can rapidly configure NetApp storage systems. You can also automate storage discovery to further simplify locating and configuring your existing storage systems. This management software is web based, can be installed on a laptop or a server, and runs on either a Windows or a Linux environment. System Manager 8.3.x comes bundled with the NetApp clustered Data ONTAP® platform, eliminating the need for a separate installation.

### Simplified management

System Manager provides intuitive, workflow-based wizards to automate the most common device management tasks. A dashboard displays vital storage information, such as capacity utilization in aggregates, outstanding subsystem alerts, and alarms. By having all this information at your fingertips, you can perform simple management tasks quickly and more efficiently.

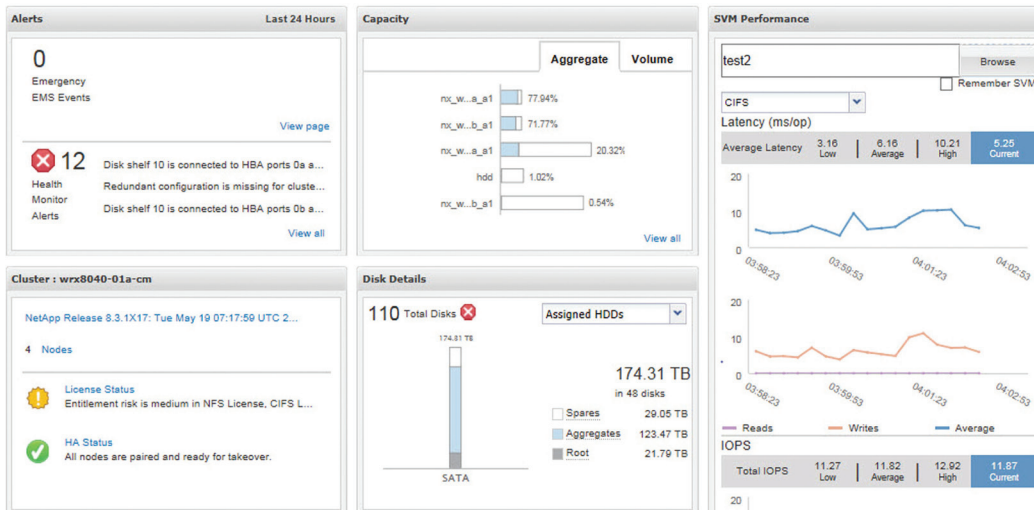


Figure 1) The OnCommand System Manager dashboard shows at-a-glance system status for one storage system or for clusters of systems.

### Extensive administrative capabilities

System Manager lets administrators easily control the powerful capabilities of NetApp storage systems: flash, disks, pooled storage, shares and exports, NetApp Snapshot® copies, mirroring, replication, and network configuration. Both SAN (iSCSI/FC/FCoE) and NAS (CIFS/NFS) storage can be managed through the same view, as well as storage for VMware environments.

### Unlocking the power of clustered Data ONTAP

System Manager provides a simple and intuitive way for users to leverage the rich data management features in the NetApp clustered Data ONTAP operating system. These features include enhanced monitoring and usability with simplified storage virtual machine setup, workflows for creating CIFS local users and groups, and easy-to-use workflows for NetApp SnapVault® and SnapMirror® management. It also offers the ability to monitor and manage the state and interconnection status of all the high-availability (HA) pairs in a cluster running Data ONTAP. And it provides templates and dashboards that improve visibility and usability.

### Clustered scale-out storage

System Manager enables administration of NetApp unified storage at scale, including management of clustered Data ONTAP. This clustering increases the level of nondisruptive operations, scalability, and ease of management for NetApp storage systems. With System Manager, users can efficiently administer their clustered storage environment.

### OnCommand System Manager key features

- Bundled with clustered Data ONTAP 8.3.x
- Intuitive browser-based GUI
- Wizard-driven configuration to get up and running quickly
- Automated nondisruptive (Data ONTAP) upgrade
- Storage provisioning and disk aggregate management
- CIFS, NFS, iSCSI, FC, and FCoE configuration
- Snapshot and SnapMirror management
- SnapVault support
- Storage virtual machine management
- Monitoring of HA pairs
- Support for all NetApp FAS systems and FlexArray software
- Support for NetApp All Flash FAS
- Support for up to 24 nodes

### Learn More About OnCommand System Manager

To find out more about the OnCommand System Manager product, go to <http://www.netapp.com/systemmanager>. For videos, workflow guides, discussions, and more, explore the System Manager Community, [netapp.com/oncommand\\_community](http://netapp.com/oncommand_community).

### About NetApp

Leading organizations worldwide count on NetApp for software, systems and services to manage and store their data. Customers value our teamwork, expertise and passion for helping them succeed now and into the future.

[www.netapp.com](http://www.netapp.com)